

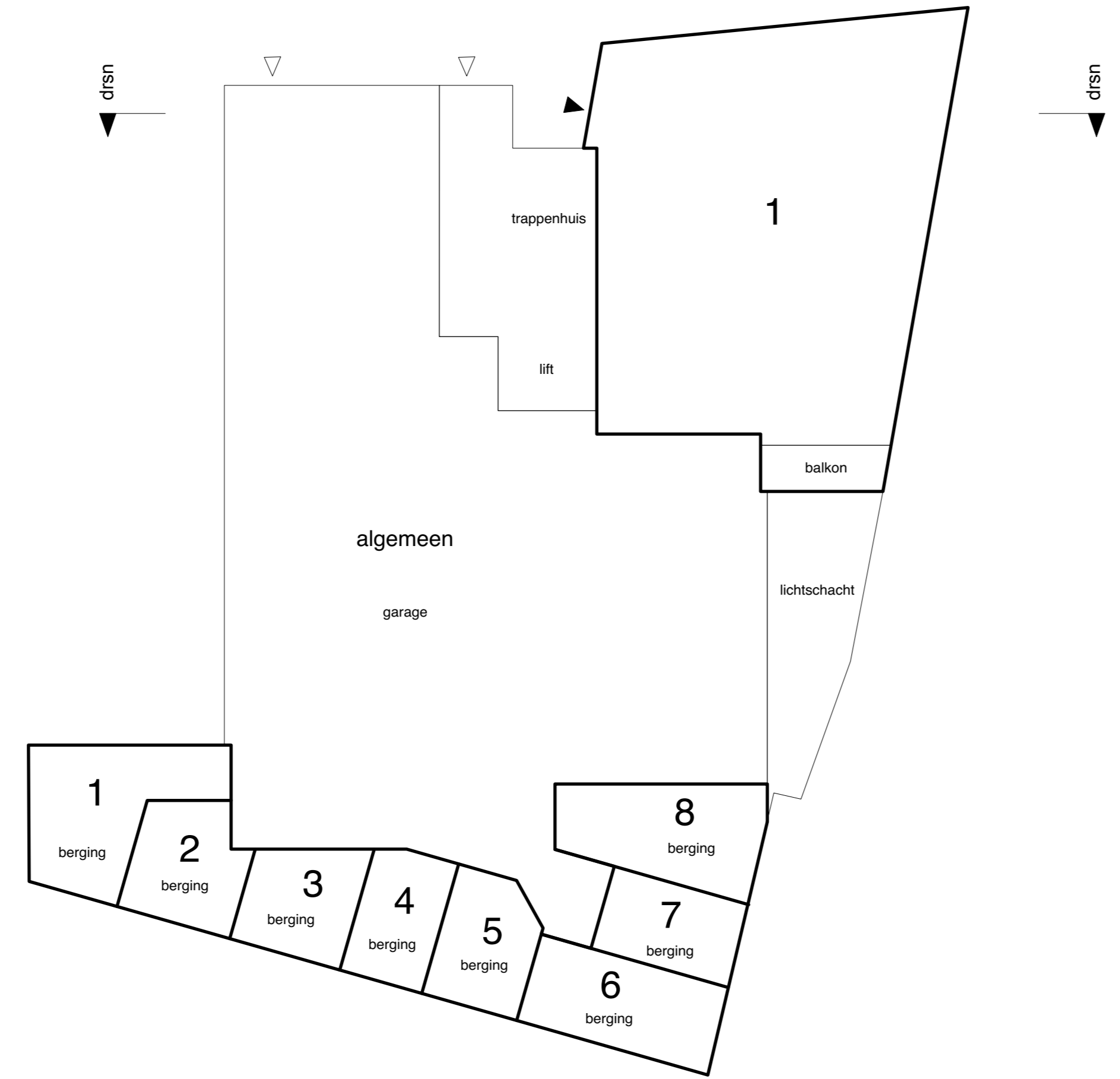
Voorgenomen splitsing object kadastraal bekend:

Gemeente: Haarlem
 Sectie: S
 Nummer: 2269, 2442 en 2761

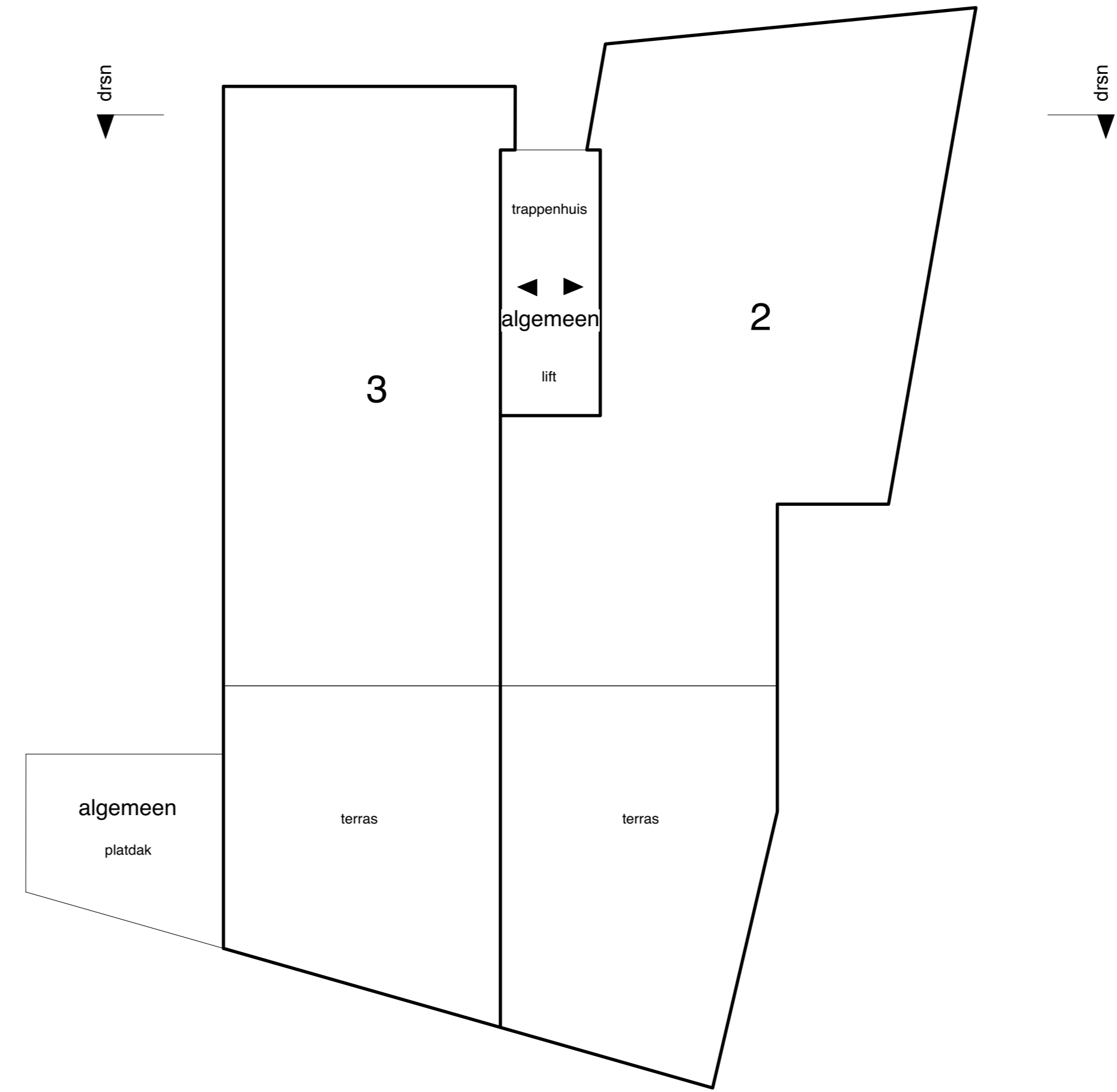
d.d. de notaris:



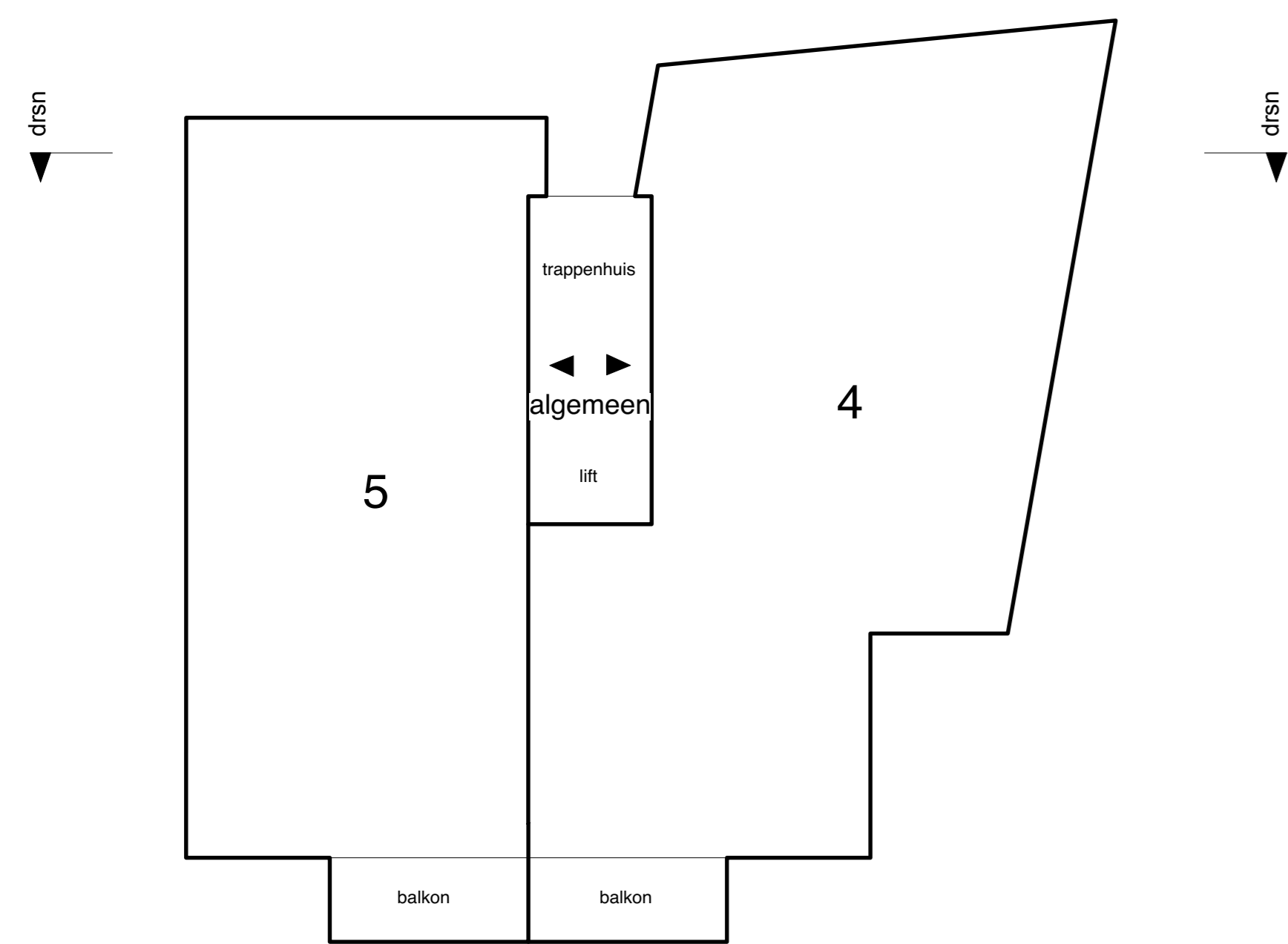
Souterrain
 schaal 1:100



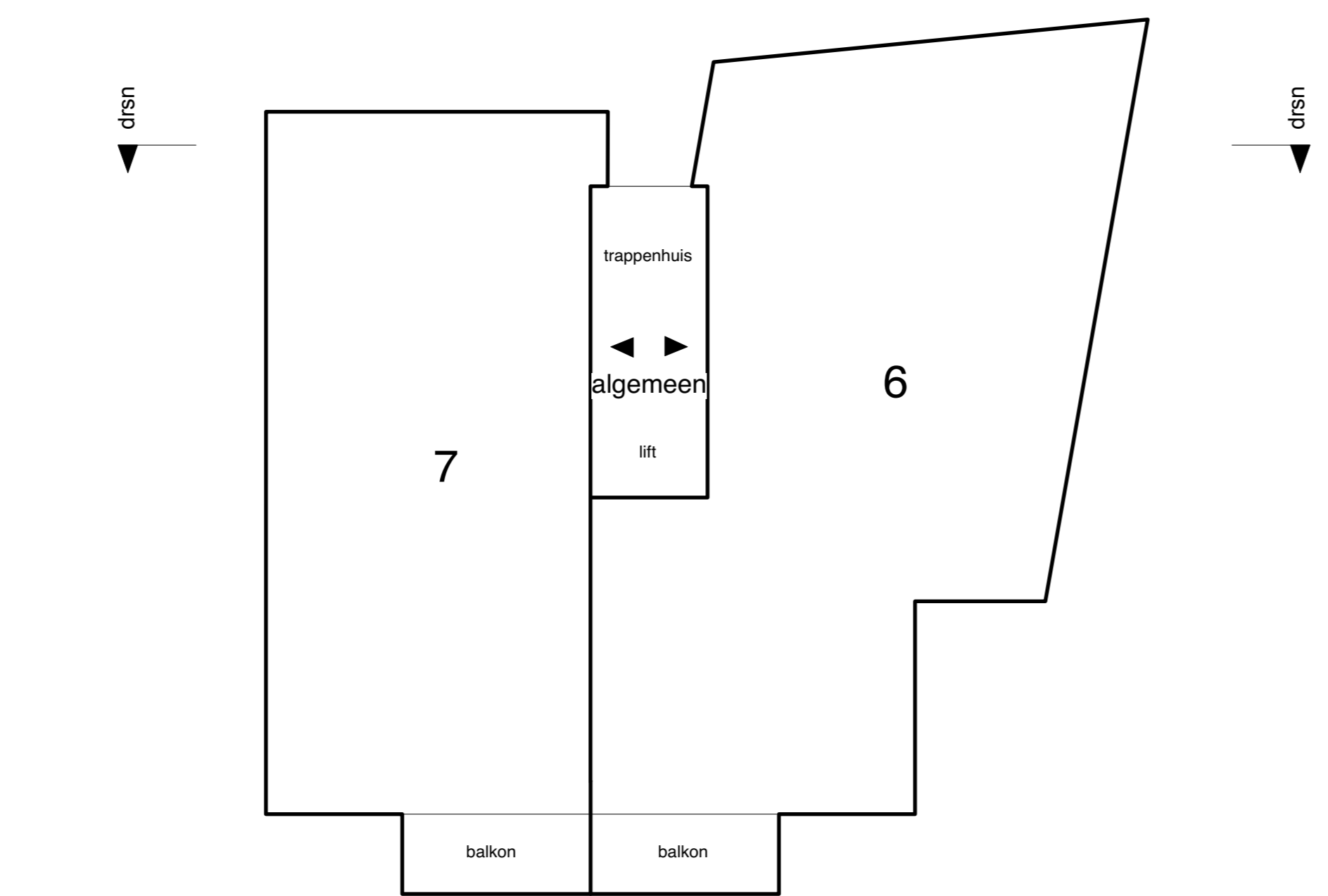
Begane grond
 schaal 1:100



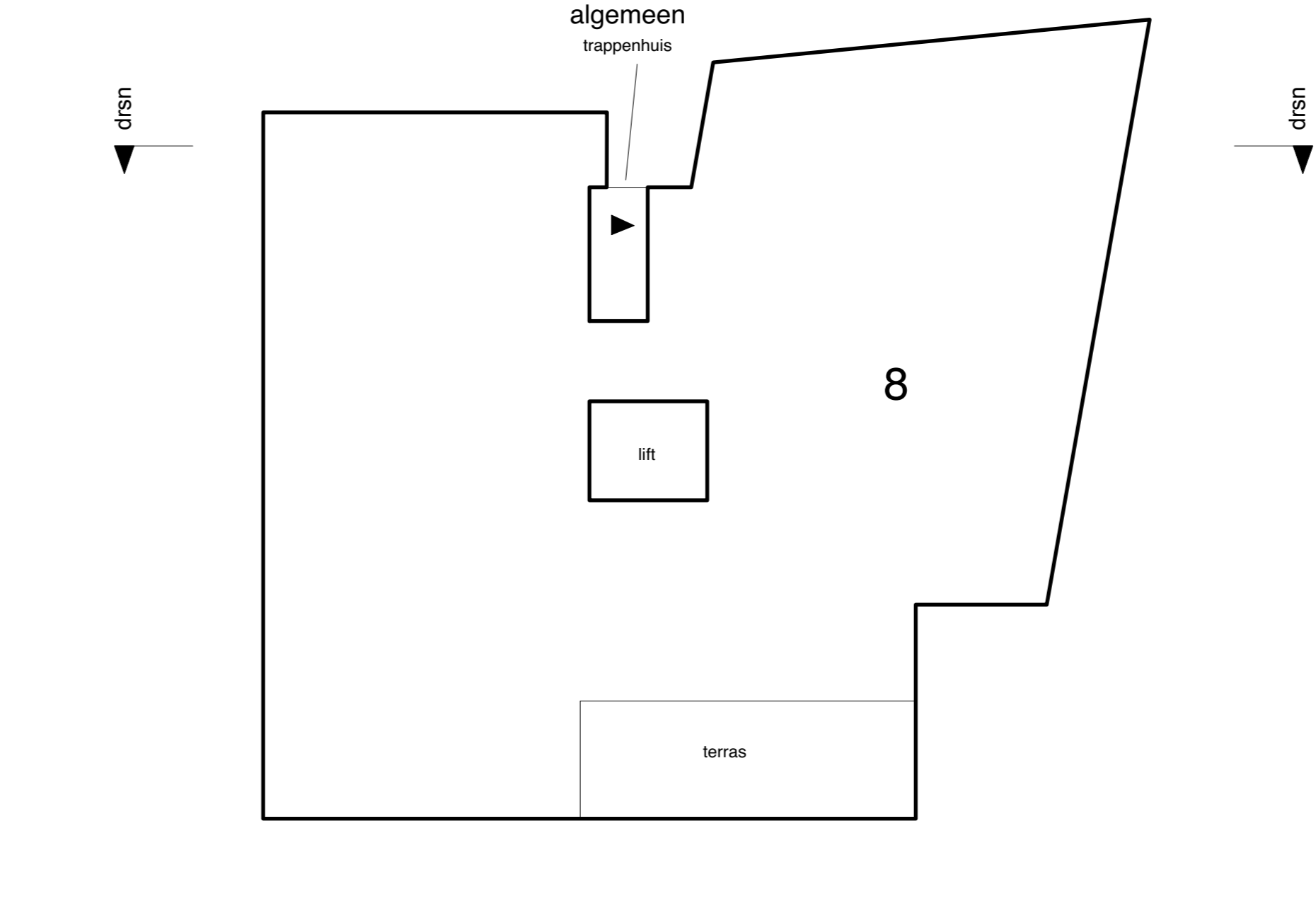
Eerste
 schaal 1:100



Tweede
 schaal 1:100



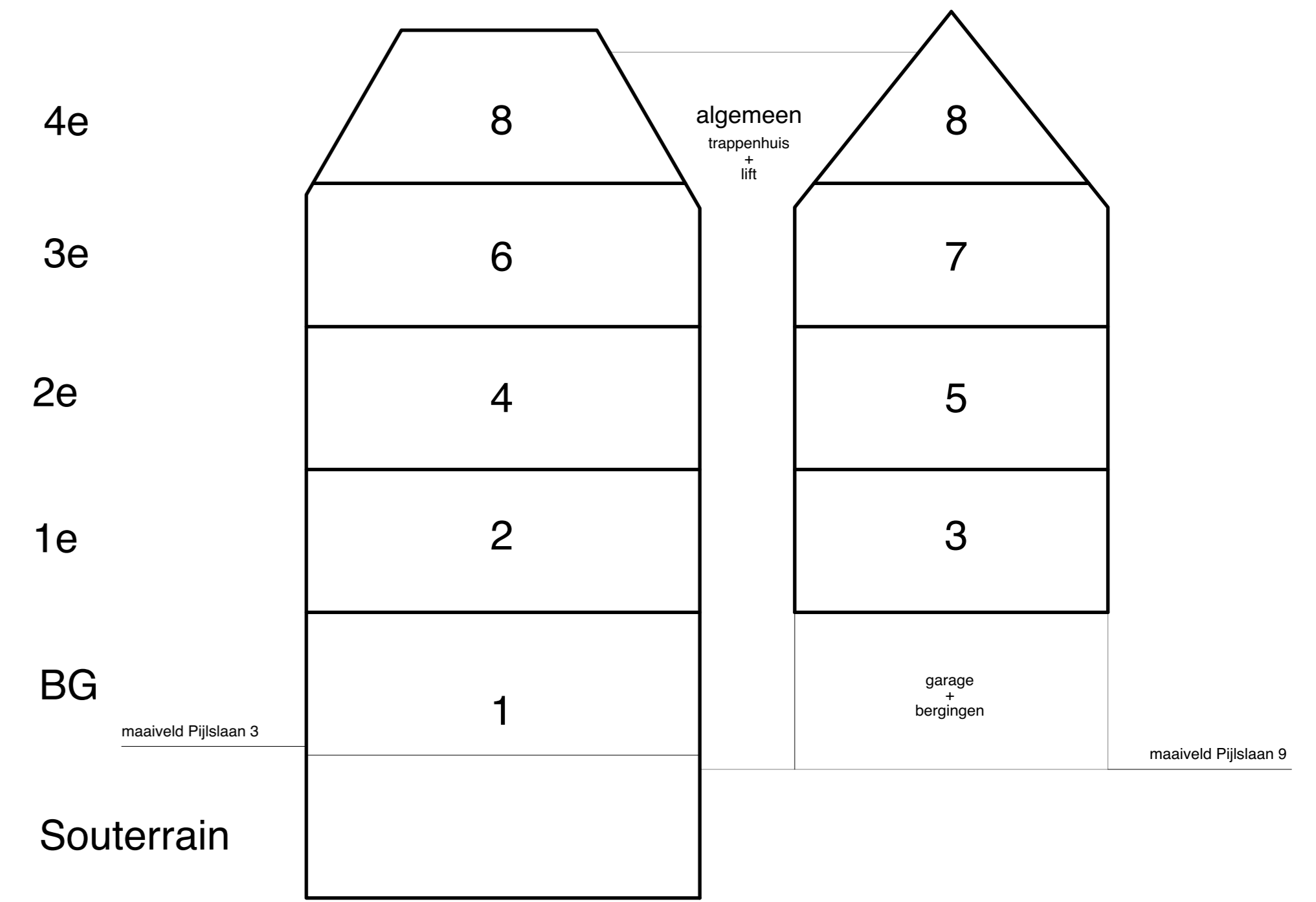
Derde
 schaal 1:100



Vierde
 schaal 1:100



Situatie schaal 1:500
 Pijlslaan 5 Haarlem



Doorsnede
 schaal 1:100

